

STATE	CONTRACT NO.	SHEET NO.	TOTAL SHEETS	RECORD DWG
ARIZ.	135.17	1	5	

TOWN OF THATCHER

ADA PARK IMPROVEMENTS - CDBG #135-17



GENERAL NOTES

1. Any work performed without the approval of the owner and/or all construction or materials not in conformance with these plans are subject to removal and replacement at the contractors expense.
2. Contractor shall assume sole responsibility for job site conditions during construction of the project, including safety of all persons and property. These jobsites are located in active, operating parks with children constantly in the area and all care must be taken to ensure patron safety. This requirement shall apply continuously and not be limited to normal working hours. Contractor shall defend, indemnify, and hold the owner harmless from any and all liability, real or alleged, in connection with the performance of work on this project.
3. The locations and completeness of existing underground or overhead utilities shown on these plans are approximate only, and have not been independently verified by the owner. The contractor, as required by law, shall call Blue Stake for the locations of all underground utilities two working days before digging at each location.
4. The contractor shall take whatever steps necessary to prevent and control dust due to construction operations. Dust control is considered incidental to the contract and no additional compensation shall be made.
5. The contractor shall be responsible for repair or replacement of any improvements or existing facilities damaged during construction operations.
6. This project will not be considered complete until all areas in and around the construction site have been cleaned of all dirt, debris, adhesives, etc.

PLAYGROUND SAFETY SURFACING NOTES

1. The contractor shall be required to submit the following prior to begin construction:
 - Product Data for each type of product, including installation and subsurface instructions.
 - Shop drawings for each type of protective surfacing including plans, sections, placement details, and attachment to substrates. Accessories and edge terminations, patterns made by varying colors of surfacing and details of graphics. Fall heights used in determining required tile thickness.
 - One full manufacturer's sample of tile, showing product/color and texture specified.
2. The contractor shall be required to submit material certificates, product certificates, test reports, warranty information, and maintenance and cleaning instructions.
3. Manufacturer and installer agree to repair or replace components of protective surfacing that fail in materials or workmanship with specified warranty period. Playground safety surfacing tiles shall be warranted for defects in materials and workmanship for 10 years from date of completed installation. Warranty will include ancillary costs associated with shipping replacement materials to the project, and all labor & costs involved in the replacement incident.
4. Playground safety surfacing tiles shall meet performance requirements established by ASTM, including impact attenuation, critical fall height tested according to ASTM F 1292, and accessibility standard, minimum surfacing performance according to ASTM F 1951.
5. Contractor shall prepare substrates to receive surfacing products according to protective surfacing manufacturer's written instructions to ensure proper slope, support and drainage for safety surfacing. Repair holes or depressions in surface with leveling and patching material. Form concrete shelf for securing & supporting terminal edges of protective surfacing. Install underdrain system as indicated on drawings.
6. Installation of tile surfacing to be completed by a factory trained and certified installer. Apply adhesive and tile support elements in accordance with manufacturer's instructions regarding all aspects of installation of tiles.
7. Contractor shall protect playground safety surfacing tiles from foot traffic for a minimum of 12 hours after installation and protect completed tiles from damage during construction.

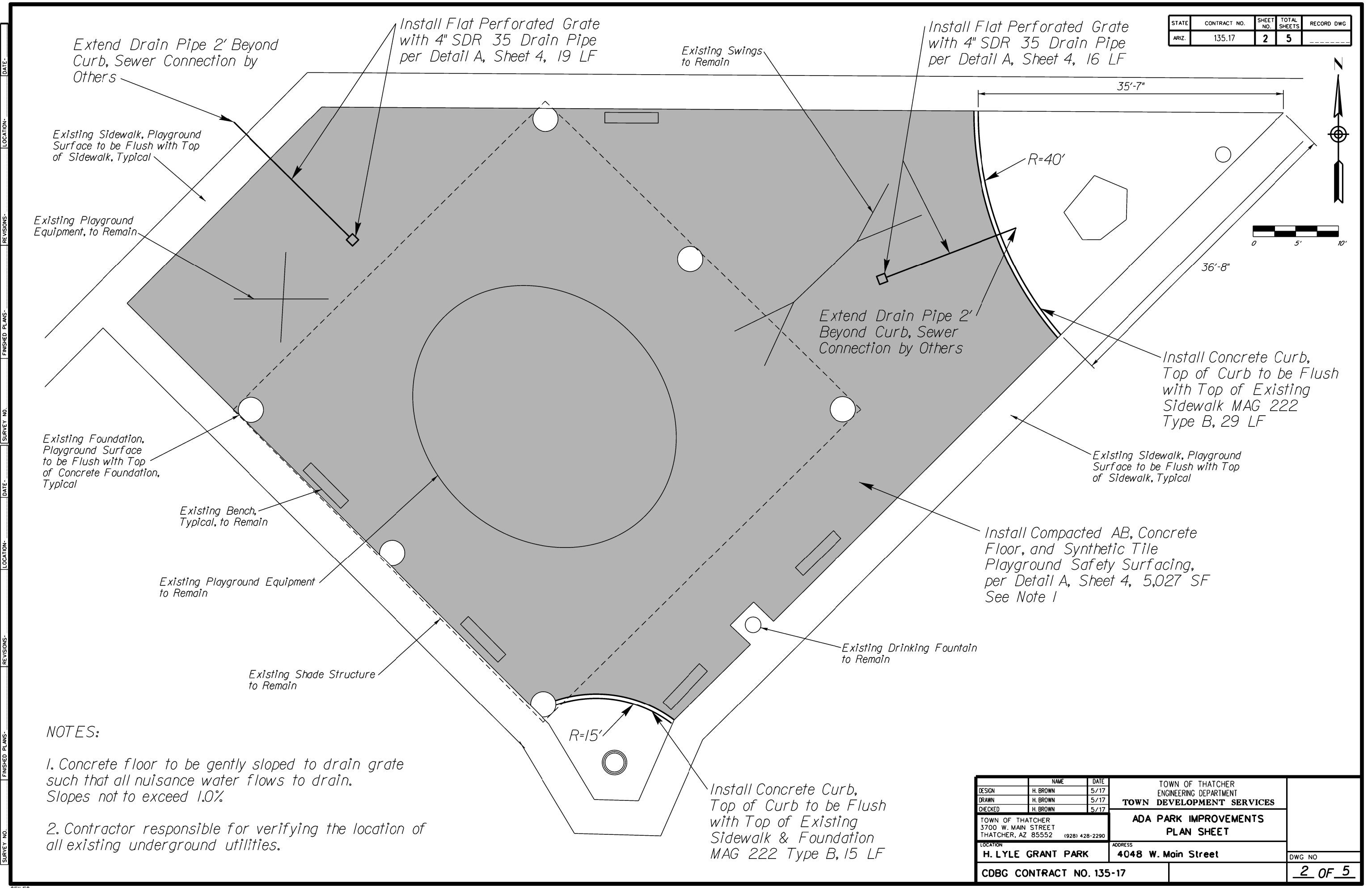
SHEET INDEX

1. Cover
2. H. Lyle Grant Park Plan Sheet
3. Daley Estates Park Plan Sheet
4. Eagle Meadows Park Plan Sheet
5. Details

DESIGN	H. BROWN	5/17	TOWN OF THATCHER ENGINEERING DEPARTMENT TOWN DEVELOPMENT SERVICES
DRAWN	H. BROWN	5/17	
CHECKED	H. BROWN	5/17	
TOWN OF THATCHER 3700 W. MAIN STREET THATCHER, AZ 85552 (928) 428-2290			ADA PARK IMPROVEMENTS PLAN SHEET
LOCATION ALL PARKS		ADDRESS	DWG NO
CDBG CONTRACT NO. 135-17			<u>1</u> OF <u>5</u>

DATE - LOCATION - REVISIONS - FINISHED PLANS - SURVEY NO. DATE - LOCATION - REVISIONS - FINISHED PLANS - SURVEY NO.

STATE	CONTRACT NO.	SHEET NO.	TOTAL SHEETS	RECORD DWG.
ARIZ.	135.17	2	5	



Extend Drain Pipe 2' Beyond Curb, Sewer Connection by Others

Install Flat Perforated Grate with 4" SDR 35 Drain Pipe per Detail A, Sheet 4, 19 LF

Install Flat Perforated Grate with 4" SDR 35 Drain Pipe per Detail A, Sheet 4, 16 LF

Existing Swings to Remain

Existing Sidewalk, Playground Surface to be Flush with Top of Sidewalk, Typical

Existing Playground Equipment, to Remain

Existing Foundation, Playground Surface to be Flush with Top of Concrete Foundation, Typical

Existing Bench, Typical, to Remain

Existing Playground Equipment to Remain

Existing Shade Structure to Remain

Extend Drain Pipe 2' Beyond Curb, Sewer Connection by Others

Install Concrete Curb, Top of Curb to be Flush with Top of Existing Sidewalk MAG 222 Type B, 29 LF

Existing Sidewalk, Playground Surface to be Flush with Top of Sidewalk, Typical

Install Compacted AB, Concrete Floor, and Synthetic Tile Playground Safety Surfacing, per Detail A, Sheet 4, 5,027 SF See Note 1

Existing Drinking Fountain to Remain

Install Concrete Curb, Top of Curb to be Flush with Top of Existing Sidewalk & Foundation MAG 222 Type B, 15 LF

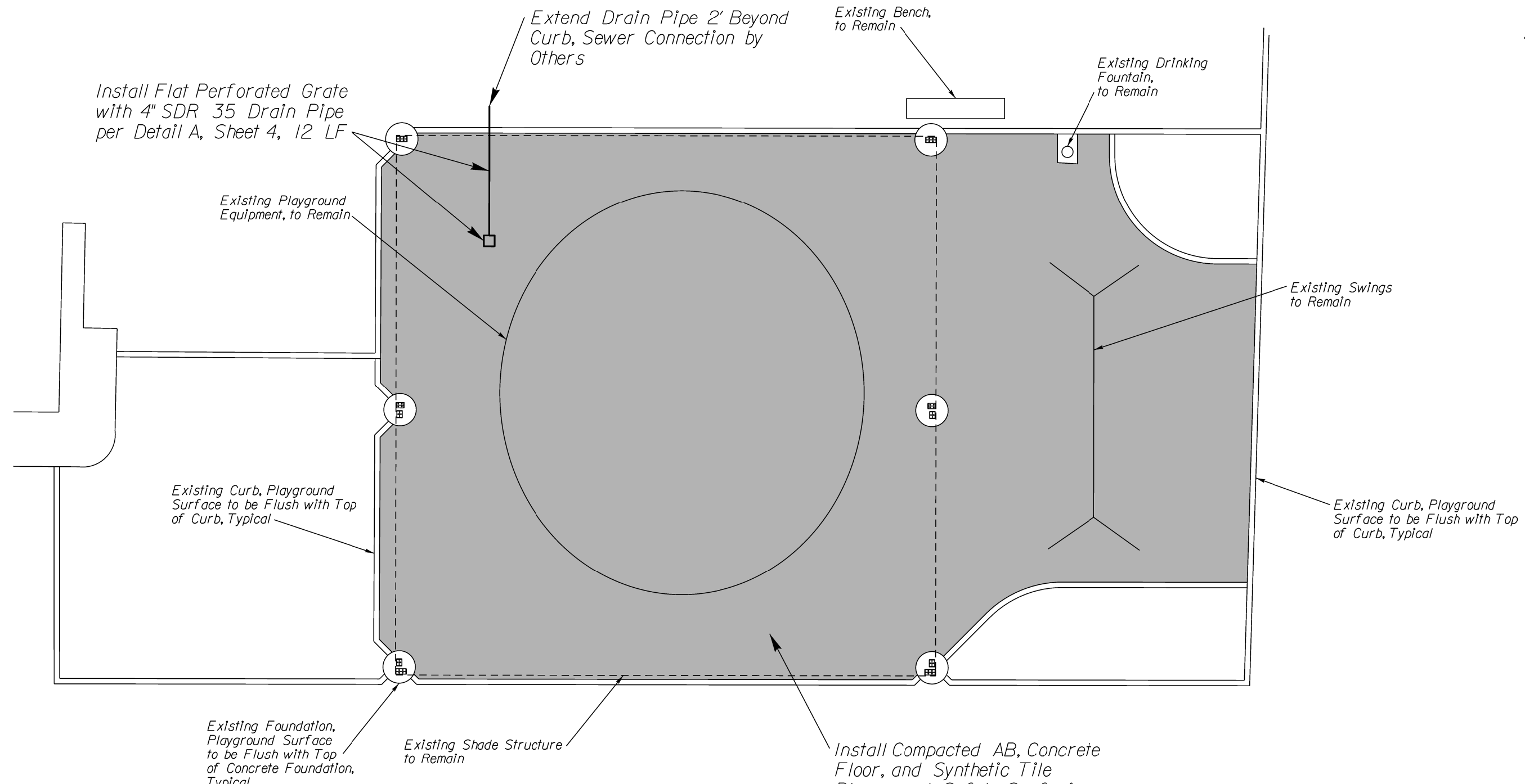
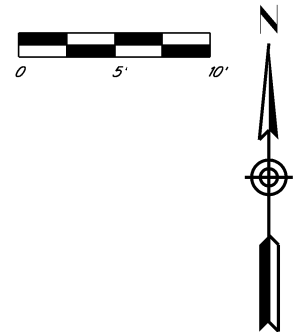
NOTES:

1. Concrete floor to be gently sloped to drain grate such that all nuisance water flows to drain. Slopes not to exceed 1.0%

2. Contractor responsible for verifying the location of all existing underground utilities.

DESIGN	H. BROWN	DATE	5/17	TOWN OF THATCHER ENGINEERING DEPARTMENT TOWN DEVELOPMENT SERVICES
DRAWN	H. BROWN	DATE	5/17	
CHECKED	H. BROWN	DATE	5/17	
TOWN OF THATCHER 3700 W. MAIN STREET THATCHER, AZ 85552 (928) 428-2290			ADA PARK IMPROVEMENTS PLAN SHEET	
LOCATION H. LYLE GRANT PARK		ADDRESS 4048 W. Main Street		DWG NO
CDBG CONTRACT NO. 135-17				2 OF 5

STATE	CONTRACT NO.	SHEET NO.	TOTAL SHEETS	RECORD DWG
ARIZ.	135.17	3	5	



NOTES:

1. Concrete floor to be gently sloped to drain grate such that all nuisance water flows to drain. Slopes not to exceed 1.0%.

2. Contractor responsible for verifying the location of all existing underground utilities.

Install Compacted AB, Concrete Floor, and Synthetic Tile Playground Safety Surfacing, per Detail A, Sheet 4, 3,664 SF See Note 1

DESIGN	H. BROWN	DATE	5/17	TOWN OF THATCHER ENGINEERING DEPARTMENT TOWN DEVELOPMENT SERVICES
DRAWN	H. BROWN	DATE	5/17	
CHECKED	H. BROWN	DATE	5/17	
TOWN OF THATCHER 3700 W. MAIN STREET THATCHER, AZ 85552		(928) 428-2290		ADA PARK IMPROVEMENTS PLAN SHEET
LOCATION DALEY ESTATES PARK		ADDRESS 3970 W. Kimball Street		DWG NO
CDBG CONTRACT NO. 135-17				3 OF 5

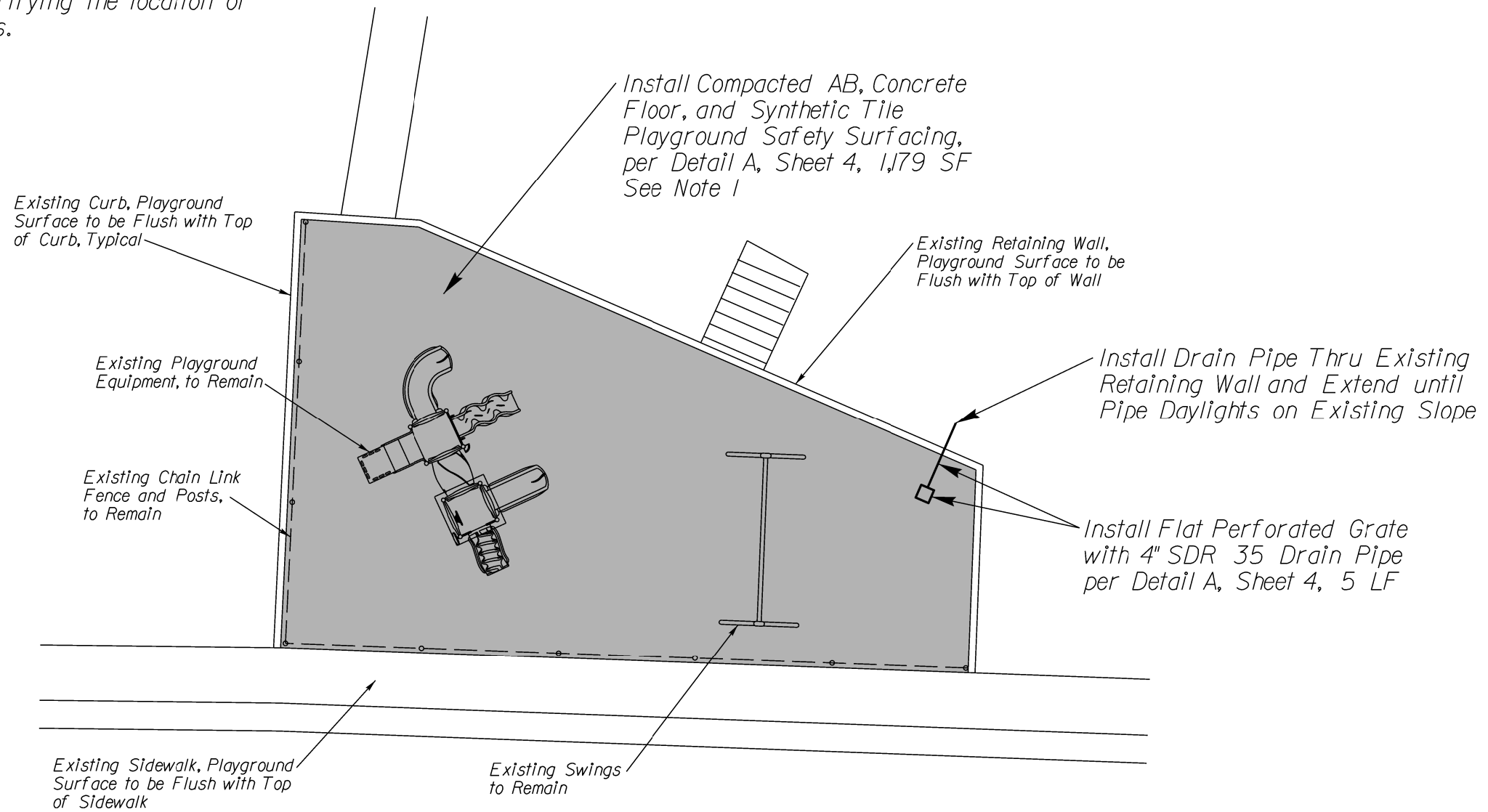
DATE LOCATION FINISHED PLANS SURVEY NO. DATE LOCATION FINISHED PLANS SURVEY NO. DATE LOCATION FINISHED PLANS SURVEY NO.

STATE	CONTRACT NO.	SHEET NO.	TOTAL SHEETS	RECORD DWG
ARIZ.	135.17	4	5	

NOTES:

1. Concrete floor to be gently sloped to drain grate such that all nuisance water flows to drain. Slopes not to exceed 1.0%.

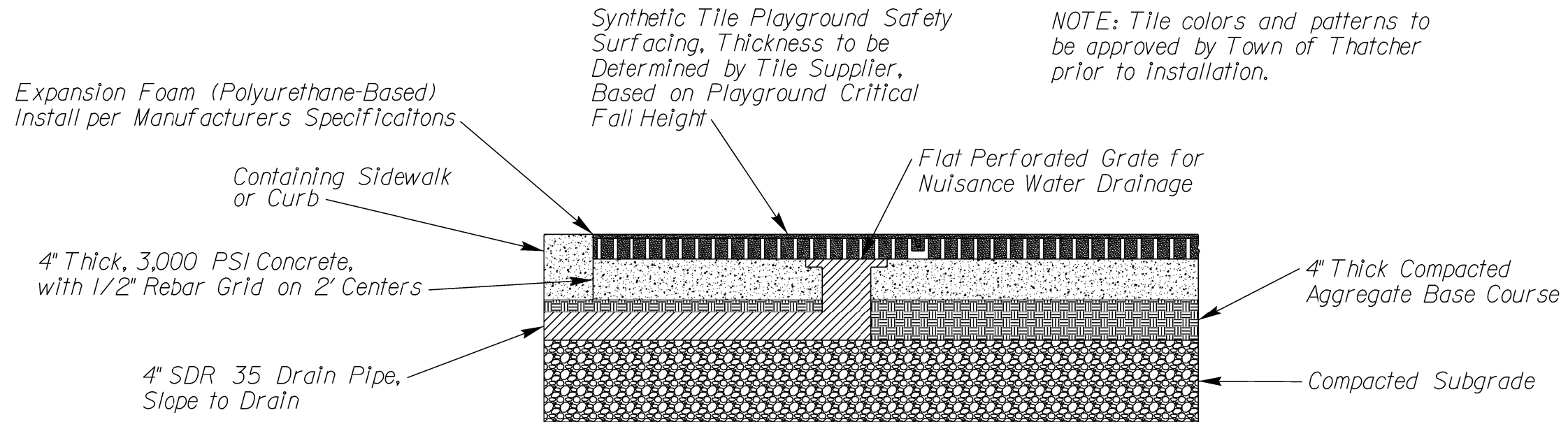
2. Contractor responsible for verifying the location of all existing underground utilities.



DATE LOCATION FINISHED PLANS REVISIONS SURVEY NO. DATE LOCATION FINISHED PLANS REVISIONS SURVEY NO.

DESIGN	H. BROWN	5/17	TOWN OF THATCHER ENGINEERING DEPARTMENT TOWN DEVELOPMENT SERVICES
DRAWN	H. BROWN	5/17	
CHECKED	H. BROWN	5/17	
TOWN OF THATCHER 3700 W. MAIN STREET THATCHER, AZ 85552 (928) 428-2290			ADA PARK IMPROVEMENTS PLAN SHEET
LOCATION EAGLE MEADOWS PARK		ADDRESS 530 N. 1st Avenue	
CDBG CONTRACT NO. 135-17			DWG NO 4 OF 5

STATE	CONTRACT NO.	SHEET NO.	TOTAL SHEETS	RECORD DWG
ARIZ.	135.17	5	5	



Detail A
N.T.S.

DATE
LOCATION
REVISIONS
FINISHED PLANS
SURVEY NO.
DATE
LOCATION
REVISIONS
FINISHED PLANS
SURVEY NO.

DESIGN	H. BROWN	5/17	TOWN OF THATCHER ENGINEERING DEPARTMENT TOWN DEVELOPMENT SERVICES
DRAWN	H. BROWN	5/17	
CHECKED	H. BROWN	5/17	
TOWN OF THATCHER 3700 W. MAIN STREET THATCHER, AZ 85552 (928) 428-2290			ADA PARK IMPROVEMENTS PLAN SHEET
LOCATION ALL PARKS		ADDRESS	DWG NO
CDBG CONTRACT NO. 135-17			5 OF 5